

SILFAB
COMMERCIAL **NTC**

SIL-570 XM+
BIFACIAL

SILFAB
SOLAR®



• NEXT-GENERATION N-TYPE CELL TECHNOLOGY

Manufactured exclusively in the USA.

- Improved Shade Tolerance
- Improved Low-Light Performance
- Increased Performance in High Temperatures
- Efficient Bifacial Energy Yield
- Enhanced Durability
- Reduced Degradation Rate
- 25-Year Product Warranty/
30-Year Performance Warranty



SILFABSOLAR.COM



ELECTRICAL SPECIFICATIONS		570			Performance at low irradiance (200 W/m ²)	
Test Conditions		STC	BSTC	NOCT	FRONT	BACK
Module Power (Pmax)	Wp	570	621.9	420.8	110.84	77.94
Maximum power voltage (Vpmax)	V	43.74	43.74	40.23	42.67	42.64
Maximum power current (Ipmax)	A	13.03	14.22	10.46	2.60	1.83
Open circuit voltage (Voc)	V	52.03	52.09	47.85	49.34	48.89
Short circuit current (Isc)	A	13.79	15.04	11.07	2.72	2.04
Module efficiency	%	22.1%				
FF	%				82.63%	78.05%
Maximum system voltage (VDC)	V	1500				
Series fuse rating	A	30				
Power Tolerance	Wp	0 to +10				
Bifaciality Factor	%	80+-10				

Performance conditions: Measurement tolerance $\leq 3\%$ • Standard Test Conditions (STC): 1000 W/m², AM 1.5, Temperature 25 °C • Nominal Operating Cell Temperature (NOCT): 800 W/m², AM 1.5 • Bifacial Standard Test Conditions (BSTC): 1000 W/m² + $\phi \times 135$ W/m², $\phi = 80\%$, AM 1.5 • Electrical characteristics may vary by $\pm 5\%$.

MECHANICAL PROPERTIES / COMPONENTS	METRIC	IMPERIAL
Module weight	28.5 kg ± 0.2 kg	62.8 lbs ± 0.4 lbs
Dimensions (H x L x D)	2278 mm x 1133 mm x 35 mm	89.7 in x 44.6 in x 1.4 in
Maximum surface load (wind/snow)*	2400 Pa rear load / 5400 Pa front load	50.1 lb/ft ² rear load / 112.8 lb/ft ² front load
Hail impact resistance	ϕ 25 mm at 83 km/h	ϕ 1 in at 51.6 mph
Cells	144 Half cells - N-Type Silicon solar cell 182 mm x 91 mm	144 Half cells - N-Type Silicon solar cell 7.16 in x 3.58 in
Glass	3.2 mm high transmittance, tempered, anti-reflective coating	0.126 in high transmittance, tempered, anti-reflective coating
Cables and connectors (refer to installation manual)	1350 mm, ϕ 5.7 mm, EVO2 from Staubli (or custom length)	53.1 in, ϕ 0.22 in (12 AWG), EVO2 from Staubli (or custom length)
Backsheet	High durability, superior hydrolysis and UV resistance, multi-layer dielectric film, transparent PV backsheet	
Frame	Anodized Aluminum (Silver)	
Junction Box	UL 3730 Certified, IEC 62790 Certified, IP68 rated, 3 diodes	

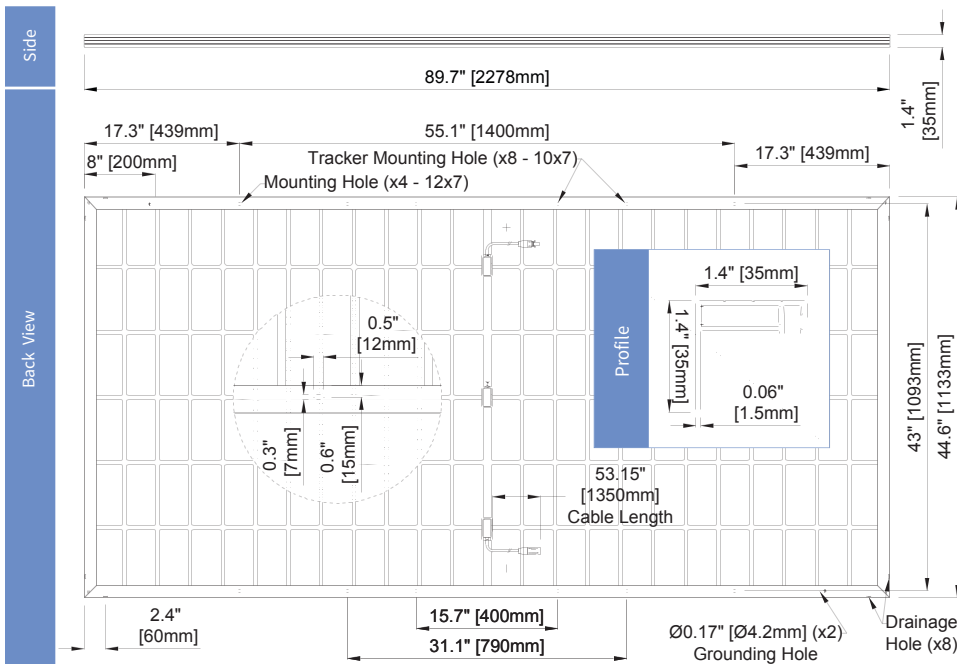
TEMPERATURE RATINGS		WARRANTIES	
Temperature Coefficient Isc	0.04 %/°C	Module product workmanship warranty	25 years**
Temperature Coefficient Voc	-0.24 %/°C	Linear power performance guarantee	30 years
Temperature Coefficient Pmax	-0.29 %/°C		$\geq 98\%$ end 1st yr $\geq 94.7\%$ end 12th yr $\geq 90.8\%$ end 25th yr $\geq 89.3\%$ end 30th yr
NOCT ($\pm 2^\circ\text{C}$)	45 °C		
Operating temperature	-40/+85 °C		

CERTIFICATIONS		SHIPPING SPECS	
Product	UL 61215, UL 61730, CSA C22.2#61730, IEC 61215, IEC 61730, IEC 61701 (Salt Mist Corrosion), IEC 62716 (Ammonia Corrosion), CEC Listed, UL Fire Rating: Type 1	Modules Per Pallet:	29
Factory	ISO9001:2015	California (Pallets per load)	21
		Others (Pallets per load)	22

* **▲** Warning. Read the Safety and Installation Manual for mounting specifications and before handling, installing and operating modules.

** 12 year extendable to 25 years subject to registration and conditions outlined under "Warranty" at silfabsolar.com.

PAN files generated from 3rd party performance data are available for download at: silfabsolar.com/downloads.



SILFAB SOLAR INC.

1770 Port Drive
Burlington WA 98233 USA
T +1 360.569.4733
info@silfabsolar.com
[SILFABSOLAR.COM](https://silfabsolar.com)

7149 Logistics Lane
Fort Mill SC 29715 USA
T +1 839.400.4338

240 Courtneypark Drive East
Mississauga ON L5T 2S5 Canada
T +1 905.255.2501
F +1 905.696.0267

Silfab - SIL-570-XM+-BIFACIAL 20250402

No reproduction of any kind is allowed without permission. Data and information is subject to modifications without notice. © Silfab Solar Inc., 2024. Silfab Solar® is a registered trademark of Silfab Solar Inc.